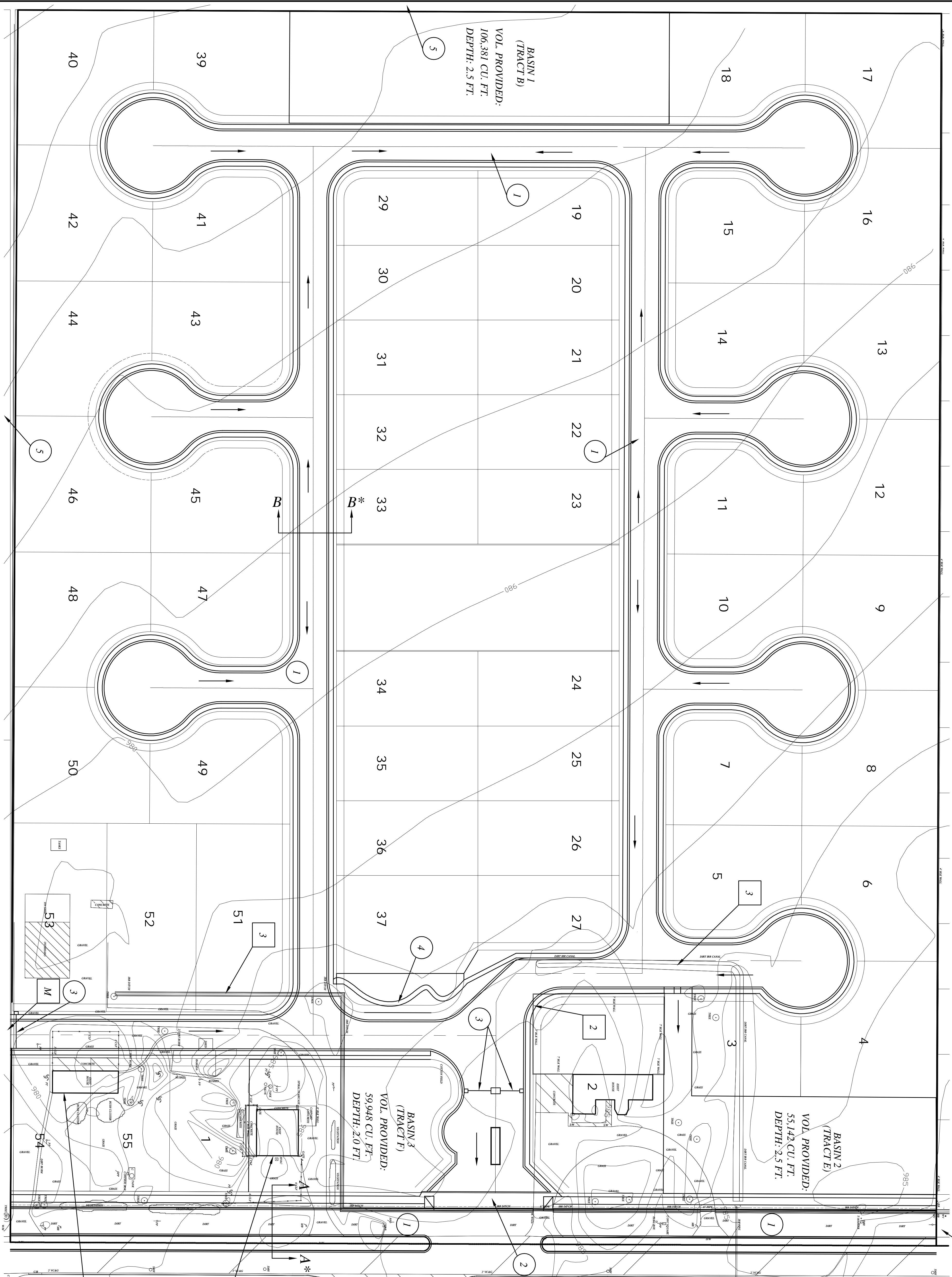
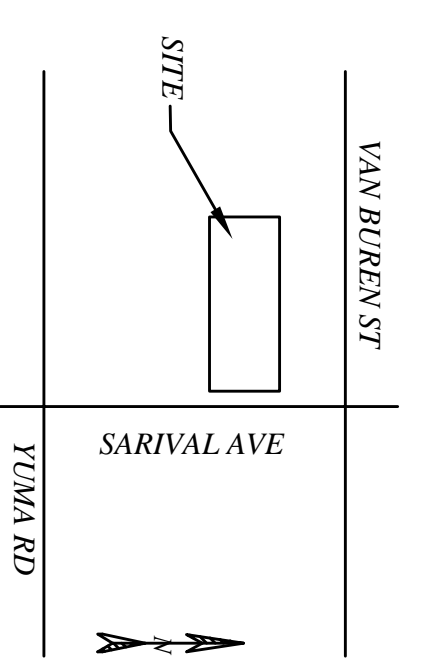


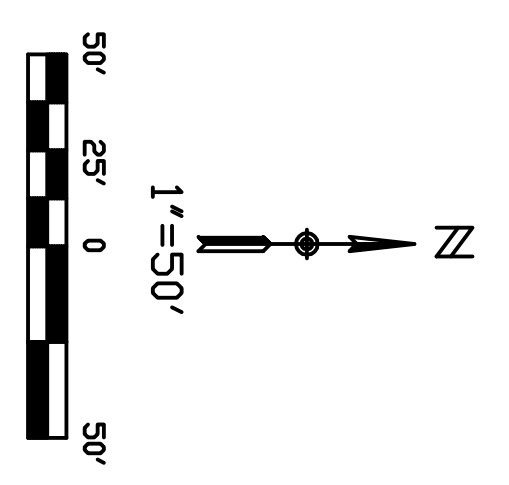
# EXISTING TOPOGRAPHY AND ELEVATION PROPOSED GRADING, DRAINAGE, & IMPROVEMENTS



VICINITY MAP



NOT TO SCALE



NOTES

- 1 INSTALL NEW AC PAVEMENT
  - 2 INSTALL DRIVEWAY
  - 3 INSTALL GATE
  - 4 INSTALL 5' SIDEWALK
  - 5 INSTALL 6' MANSORY WALL
  - 1 REMOVE EXISTING HOUSE
  - 2 REMOVE BLOCK WALL
  - 3 ABANDON EXISTING IRR.
  - M MATCH EXISTING
- \* SECTIONS ON SHEET 1  
 → DRAINAGE DIRECTION

RETENTION CALCULATIONS

V<sub>r</sub> = VOLUME REQUIRED  
 V<sub>r</sub> = C/P(12A)P = 3.0 IN (COG)  
 A = 30 ACRES  
 C<sub>w</sub> = 0.59  
 V<sub>r</sub> = 98,986 CU.FT.  
 V<sub>p</sub> = VOLUME PROVIDED  
 V<sub>p</sub> = TRACT B+TRACT E+TRACT F  
 V<sub>p</sub> = 228,471 CU.FT.

NOT FOR CONSTRUCTION

job no. 05-008C  
 date 11/2006  
**263-1100**  
 Bill Stover, Chief  
 BOULDER COUNTY

PRELIMINARY PLAT  
 FOR  
 BENNETT ESTATES  
 GOODYEAR, ARIZONA

designed M.A.C.  
 drafted M.A.C.  
 checked D.H.M.



**CANO INTERNATIONAL CONSULTANTS, INC.**  
 INTERNATIONAL CONSULTANTS, INC. 7015 S. 23RD LANE, PHOENIX, AZ. 85041 (602) 243-9977, michael.cano@canoic.com